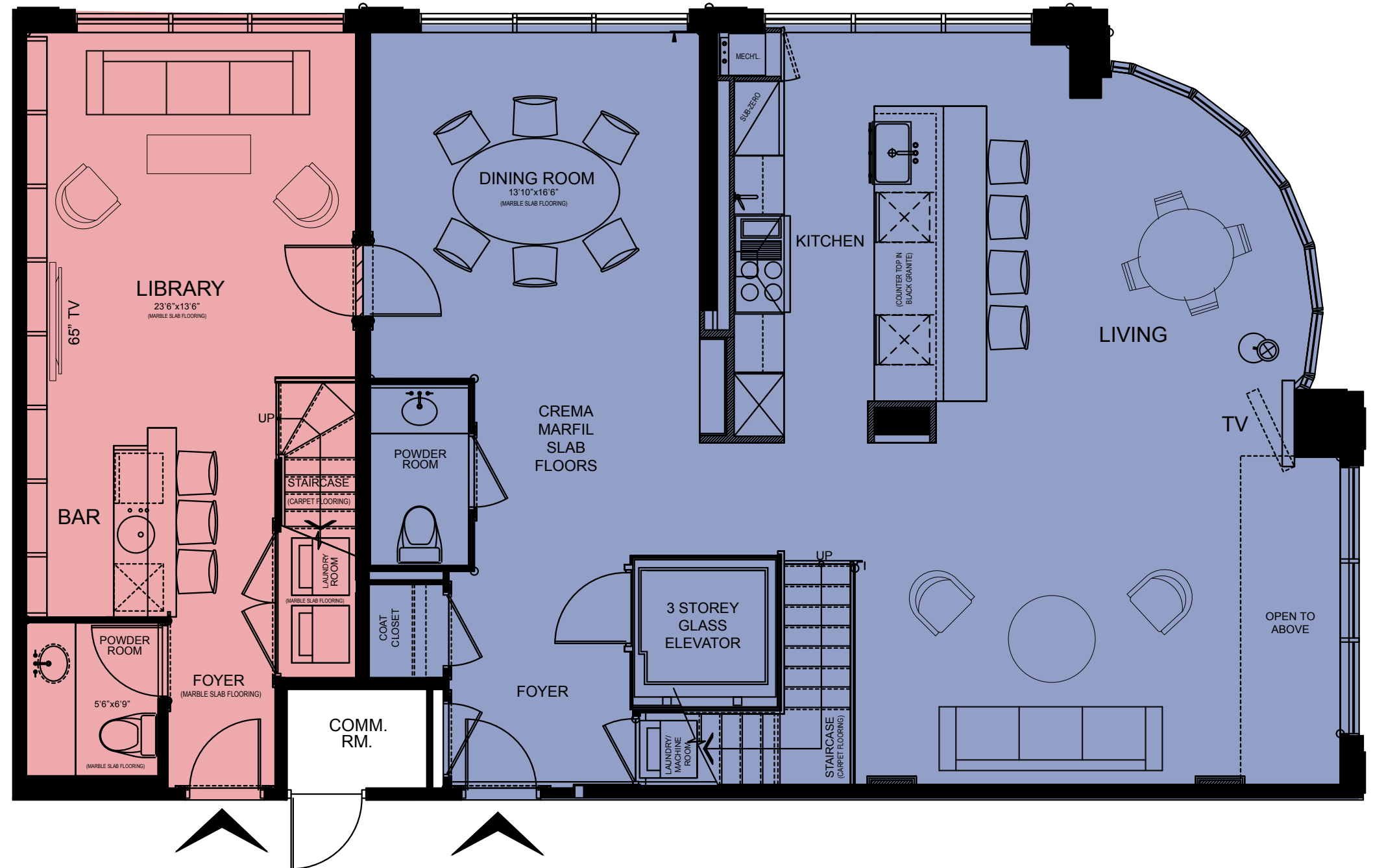




## PENTHOUSE LEVEL 1

### FEATURES

- **5,282 SQ FT\*** COMBINED 3-STOREY PENTHOUSE.
- PRIVATE GLASS ELEVATOR.
- FLOOR-TO-CEILING WINDOWS.
- MULTIPLE FIREPLACES.
- MARBLE SLAB FLOORING.
- ONYX CLAD WALLS.
- 2 BEDROOMS + LIBRARY.
- 5 WASHROOMS.
- **KOHLER** OVERFLOWING TUB WITH CHROMATHERAPY.
- LIBRARY WITH BAR + POWDER ROOM.
- DINING ROOM.
- MAIN FLOOR PROFESSIONAL KITCHEN WITH **WOLFE & SUB-ZERO** APPLIANCES + 3RD FLOOR CATERING KITCHEN.
- 2 75" + 2 65" SMART TV'S.
- THIRD FLOOR MEDIA ROOM WITH 14' CEILINGS, SLATE FLOOR, 75" **SAMSUNG** TV, INDOOR KITCHEN WITH **SUB-ZERO** FRIDGE & ICE MAKER, FIREBLACE, & MOTORIZED BLINDS.
- LARGE ROOFTOP TERRACE OVERLOOKING THE **ROGERS CENTRE & DOWNTOWN TORONTO** WITH HOT TUB, STAINLESS STEEL PLANTERS & OUTDOOR KITCHEN + BBQ.
- **LUTRON** LIGHTING & MOTORIZED DRAPES.



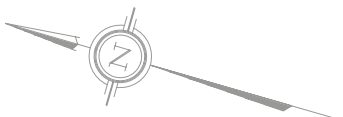
THE **SOHO PENTHOUSE** CONSISTS OF **TWO** SEPARATE ONE-BEDROOM SUITES.

- PENTHOUSE 1 (**SUITE 1512** - THREE STOREY)
- PENTHOUSE 2 (**SUITE 1511** - TWO STOREY)

FOR INTERNAL USE ONLY

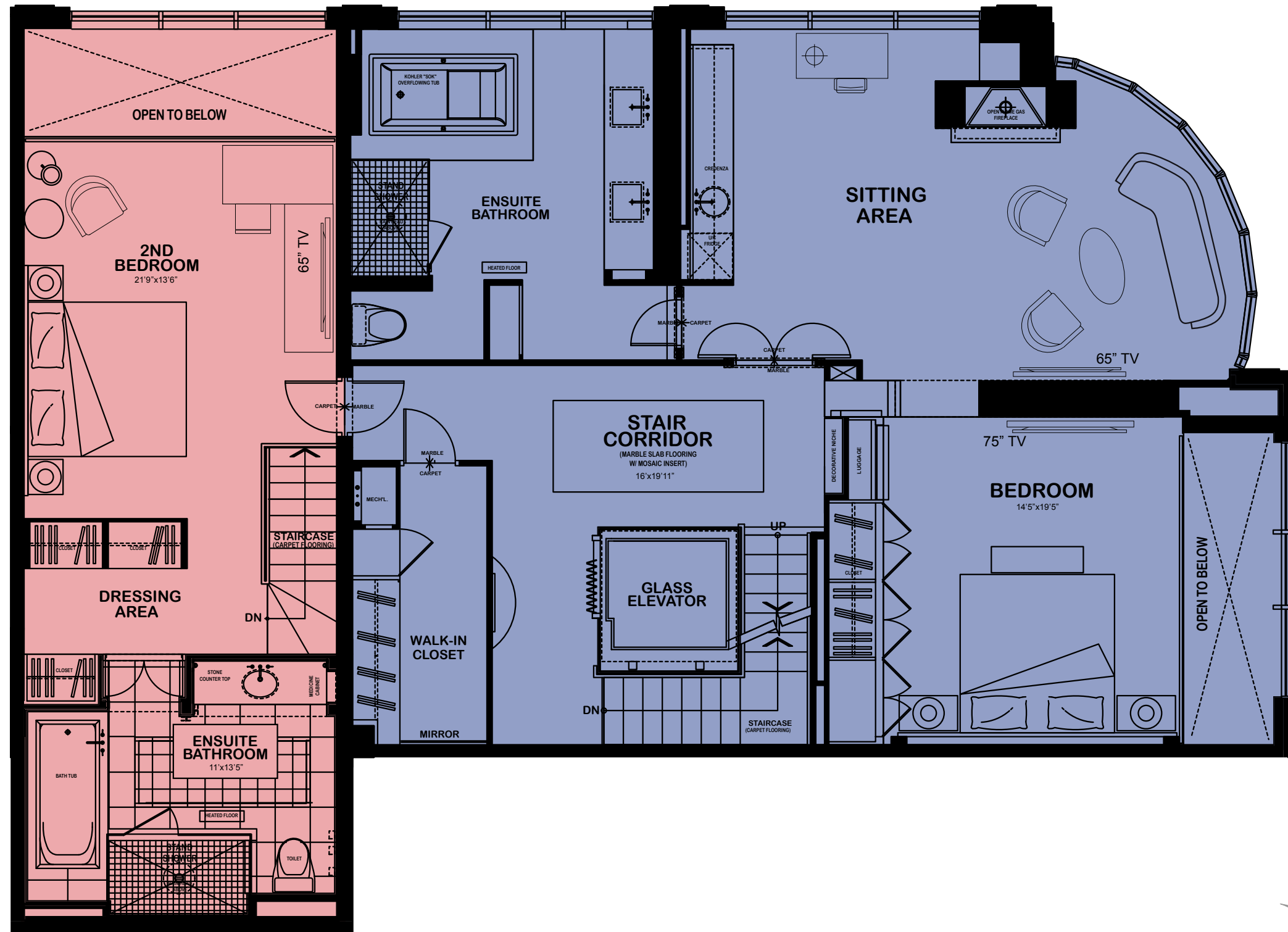
RACK RATE (DAILY RATE): **SUITE 1512** - \$3,500 • **SUITE 1511** - \$1,500

DAILY RATE SUBJECT TO CHANGE WITHOUT NOTICE. JAN 10, 2020

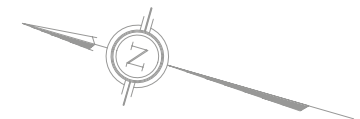




# PENTHOUSE LEVEL 2



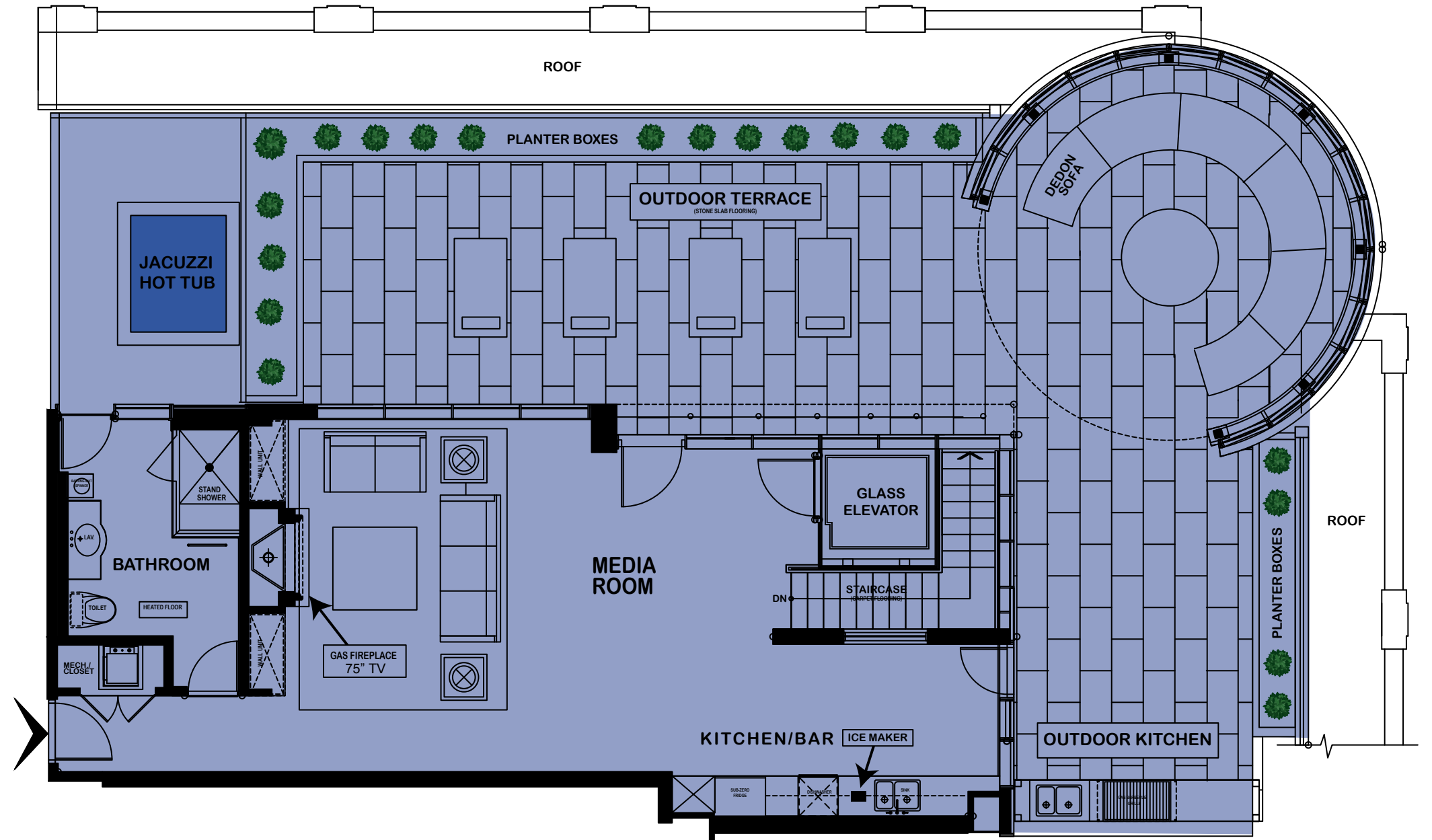
■ PENTHOUSE 1 (SUITE 1512)  
■ PENTHOUSE 2 (SUITE 1511)



# PENTHOUSE LEVEL 3 (ROOFTOP MEDIA ROOM AND TERRACE)

## FEATURES

- 1,215 SQ FT\* TERRACE.
- 859 SQ FT\* INTERNAL.
- ONYX WALLS & FIREPLACE.
- INDOOR BAR & KITCHEN, WITH ICE MAKER & **SUBZERO** FRIDGE.
- MOTORIZED SHEAR-WEAVE.
- OUTDOOR KITCHEN/BBQ
- **JACUZZI** HOT TUB.



■ PENTHOUSE 1 (SUITE 1512)

